

# IM-D3000

The IM-D3000 is an advanced industrial dot-peen marking machine designed for marking metal nameplates and parts made of materials such as aluminum, brass, and stainless steel. Its benchtop design provides a spacious working area, allowing for the handling of larger workpieces. The machine supports both electric and pneumatic marking methods, giving you the flexibility to choose the best option for your environment.



### Key Features

- Versatile Marking Methods: Supports both electric and pneumatic marking methods, allowing for optimal choice based on the working environment.
- Spacious Working Area: Offers a large marking range applicable to various fields.
- Multi-Metal Marking: Capable of dot peen marking on various metals, including aluminum, brass, and stainless steel.
- Automatic Height Control: Equipped with a Z-axis step motor for automatic height adjustment, ensuring ease of use.
- Compact Design: Can be installed in small spaces due to its compact size.
- Dedicated Software: Provides features such as text, logos, patterns, serial numbers, and barcodes, and is user-friendly for anyone to operate.
- Integrated Status Display: Includes an LCD for intuitive machine status monitoring.

### Product Specifications

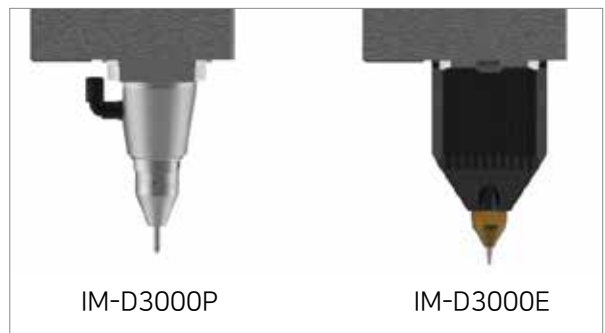
Dimensions	371(W) x 536(D) x 638(H) (mm)	Weight	35kg	Max. Travel Speed	XY : 180mm/s, Z : 50mm/s
Working Area	P - 158(X)*118(Y)*155(Z) (mm)	Head Type	Pneumatic(D3000P)	Compressor Pressure	0.4~0.8MPa (for D3000P only)
	E - 158(X)*118(Y)*165(Z) (mm)		Electric(D3000E)		
Power Supply	AC 100~240V, 50/60Hz	Power Consumption	<100W	External Ports	Supports I/O ports
Tool Material	Carbide	Temperature	5°C~40°C	Humidity	10~90%

Applications	Ideal for marking serial numbers, barcodes, logos, and graphics on materials in automotive, electrical, electronics, mobile, medical, and tool industries.
--------------	--



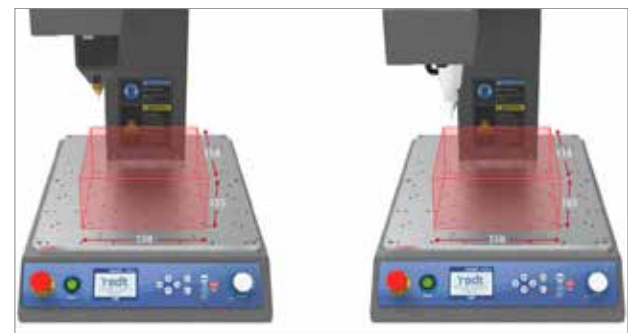
**Electric/Pneumatic Marking**

- Choose between electric and pneumatic marking methods depending on your working environment.
- Select the optimal method at the time of purchase for your specific needs.



**Spacious Working Area**

- The open-type design allows for the handling of larger workpieces.
- Provides ample working range for applications across various industries.



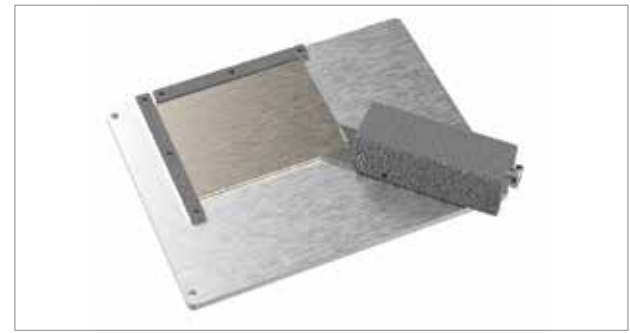
**Integrated Status Display**

- The built-in LCD provides intuitive monitoring of the machine's status.
- Displays various information such as tool position, progress, and machine status for convenient operation.



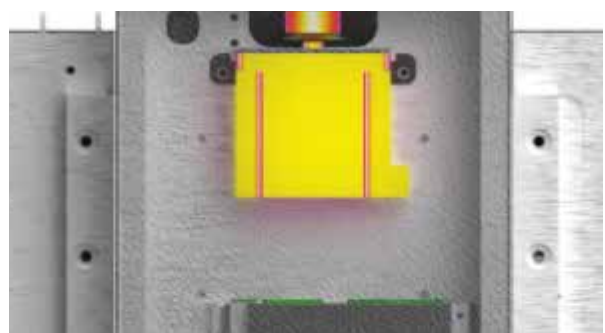
**Quick and Easy Material Clamping**

- The provided nameplate clamping tool allows for fast and easy securing and releasing of materials.
- Minimizes clamping and release time, reducing operator fatigue and improving productivity.



**Automatic Height Adjustment**

- The Z-axis step motor allows for automatic height control, making operation more convenient.
- No need to measure material thickness; simply set the marking height.
- Height storage function enables quick operations on different materials.



**Dedicated Software**

- Supports PC software optimized for the marking machine.
- Offers templates for easy positioning and operation.
- Automatic serial number input and management for continuous marking.
- Provides various marking functions including text, logos, and patterns.

